



Pikes Peak Area
Council of Governments
Communities Working Together



PIKES PEAK
AREA AGENCY ON AGING
Answers • Assistance • Advocacy



Pikes Peak Regional Mobility Guide

www.ppacg.org/mobilityguide



About the Pikes Peak Area Council of Governments

Communities Working Together

It is the mission of the Pikes Peak Area Council of Governments, a voluntary organization of 16 counties and municipalities, to provide a forum for local governments to discuss issues that cross their political boundaries, identify shared opportunities and challenges, and develop collaborative strategies for action.

About the Pikes Peak Regional Mobility Guide

The Pikes Peak Regional Mobility Guide is assembled by the Pikes Peak Area Council of Governments' (PPACG) Mobility Department of the Area Agency on Aging. It is designed to be an accessible tool for all individuals visiting or living in our three-county region: Teller, Park, and El Paso Counties. This guide features regional public, medical, and active transportation options. PPACG will periodically update the guide to ensure additional resources and changes are accessible.

Table of Contents

Regional	3
Intercity Bus Transit	3
El Paso County	5
Public Bus Services	5
Local Ride Share Programs	8
Paratransit	12
Specialized Transit	13
Rural Bus Transit	18
Medical Transport	19
Medicaid NEMT Rides	20
Taxi	29
Airport Service	30
Ride Share Apps	31
Bicycle and Pedestrian	33
Veterans Transportation	36
Teller County	38
Public Bus Service	38
Senior / NEMT Transportation	40
Park County	45
Senior / NEMT Transportation	45

Level of Service Definitions

Level of Service Definitions

Bus Stop - Designation location for individual to meet the pick up vehicle.

Curbside Pickup - Driver will meet individual at a specific agreed upon location.

Door to door - Pick up driver will meet individual at their door and escort them to the vehicle.

Door-thru-door - Pick up driver will assist individual in their home and escort them to the vehicle.

Specialized Transportation: Transit services for individuals who need door-through-door services or ADA accessible transportation out of Metro Mobility's service area.



Regional

Intercity Bus Transit

Bustang/Outrider



Telephone 800-900-3011

Website ridebustang.com

Service For General Public

Wheelchair Accessible, No Airport

Service Area

Bustang:

North Denver/Ft. Collins;
South Denver/CO Springs;
West Denver/Grand Junction

Outrider:

Lamar/CO Springs;
Alamosa/Pueblo;
Durango/Grand Junction;
Gunnison/Denver;
Craig/Denver

Level of Service

Bus Stop Location

Hours of Service

Mon–Fri throughout day in each region, except major holidays

Cost

Bustang:

North \$9–\$10 one way;
South \$5–\$12 one way;
West \$5–\$43 one way

Additional Information

Can buy tickets up to 6 months in advance; senior/disabled discount; **Stops enroute:** 6 between Denver & Ft. Collins, 9 between Denver & CO Springs with multiple stops in Denver Tech Center, 7 between Denver & Grand Junction. Note: Outrider services stop in Fairplay and counties to Denver. At Fairplay riders can transfer to Summit State to go to Breckenridge

Bustang offers the JustRide Bustang App. Digital tickets can be purchased through the app and stored on your phone. The app features the Bustang and Outrider schedules, trip planning, and “Where’s My Bus?” real-time bus tracker

Regional

Intercity Bus Transit

Ramblin Express



Telephone 719-590-8687

Website ramblinexpress.com

Service For General Public

Wheelchair Accessible, No Airport

Service Area

CO Springs/Woodland Park;
CO Springs/Pueblo;
CO Springs/Cripple Creek

Level of Service

Bus Stop Location

Hours of Service

Wed-Sun only throughout day

Cost

\$25 round trip Pueblo & Woodland Park; \$35 round trip Cripple Creek

Advance Time to Schedule Rides

48 hours

Additional Information

Designated priority seating at the front for passengers with disabilities

Fountain Municipal Transit



Telephone 719-322-2000

Website fountaincolorado.org/government/city_departments_divisions/fountain_municipal_transit

Service For General Public

Wheelchair Accessible, No Airport

Service Area

Fountain; Direct service to Garden of the Gods Citizens Service Center on Wednesdays only

Level of Service

Bus Stop Location

Hours of Service

Mon–Fri approx. 4:55 a.m. to 8:10 p.m.
(excludes week-ends and city holidays)

Cost

\$1.50, discounted rates available

Additional Information

Discount fares available for Medicare/Disabled, senior 60+ and youth ages 12– high school at \$0.85;

Holidays: service not provided on New Year’s Day, MLK Day, President’s Day, Memorial Day, Independence Day, Labor Day, Veteran’s Day, Thanksgiving Day, Day after Thanksgiving, Christmas Eve 1/2 day, Christmas Day, New Year’s Eve 1/2 day

Mountain Metro Transit Bus Service



Telephone 719-385-RIDE (7433)

Website coloradosprings.gov/mountain-metro

Service For General Public

Wheelchair Accessible, Airport Service

Service Area

Colorado Springs;
seasonally to Manitou Springs

Level of Service

Bus Stop Location

Hours of Service

Mon–Fri 5:30 a.m. – 9:45 p.m.;

Sat 6:30 a.m. – 7:00 p.m.;

Sun 7:30 a.m. – 6:00 p.m.

Cost

\$1.75 discount rates available

Additional Information

Discount fares available for Medicare/Disabled, senior 60+ and youth ages 6-18 at \$.85; Holidays: Mountain Metro service not provided on New Years Day, Thanksgiving and Christmas Day; Buses will run according to Sunday schedule on Memorial Day, Independence Day and Labor Day

Mountain Metro Transit Free Downtown Shuttle



Website <https://coloradosprings.gov/mountain-metro/page/free-downtown-shuttle>

Service For General Public

Wheelchair Accessible, No Airport

Service Area

Downtown Colorado Springs;
Tejon Street from Dale to Cimmaron

Level of Service

Bus Stop Location

Hours of Service

Mon-Thur - 7 a.m.-10 p.m.
Fri - 7 a.m.-midnight
Sat - 8 a.m.-midnight
Sun - 10 a.m.-8 p.m.

Cost

Free

Additional Information

The first phase of shuttle service begins on Sunday, May 22 with stops along Tejon Street. Pickups will be every 7-10 minutes depending on the day and time.

Phase one will have 13 stops along Tejon Street. Additional stops will be added in Phase 2

Car Pool



Telephone 719-385-RIDE (7433)

Website coloradosprings.gov/mountain-metro/page/carpool

Service For General Public Possibly Wheelchair Accessible,
No Airport

Service Area
Colorado Springs

Level of Service
Curbside Pickup

Additional Information

Mountain Metro offers a free online platform called RIDEPRO for individuals seeking opportunities to carpool. The website helps match individuals who are traveling along a similar route. If you are interested in learning more about RIDEPRO and the carpool program, please visit coloradosprings.gov/mountain-metro/page/carpool

Park-n-Ride



Telephone 719-385-RIDE (7433)

Website coloradosprings.gov/mountain-metro/page/park-n-ride

Service For General Public

Wheelchair Accessible,
No Airport

Service Area

Colorado Springs

Hours of Service

72 hour parking limit

Level of Service

Bus Stop Location

Additional Information

Park-n-Rides are easily accessible and safe locations to transfer from a single passenger vehicle to the alternative you have selected; locations at Tejon Park-n-Ride, Woodmen Park-n-Ride and Black Forest Park-n-Ride

School Pool



Telephone 719-385-RIDE (7433)

Website coloradosprings.gov/schoolpool

Service For General Public

Possibly Wheelchair Accessible,
No Airport

Service Area

Colorado Springs

Cost

Negotiated between participants

Level of Service

Curbside Pickup

Additional Information

Mountain Metro offers free, automated matching for schoolpool to find possible schoolpool partners to share rides to school for their children; Register online at coloradosprings.gov/schoolpool

Van Pool



Telephone 719-385-RIDE (7433)

Website coloradosprings.gov/mountain-metro/page/vanpool

Service For General Public

Wheelchair Accessible,
No Airport

Service Area

Colorado Springs

Level of Service

Curbside Pickup

Cost

Varies monthly based on mileage and number of passengers in the van

Additional Information

Groups of 6–10 people share a ride to work in a van dedicated to their commute; vanpool riders volunteer to drive, track maintenance and submit reports; to join fill out the web application with your starting point, destination and daily schedule, and a vanpool coordinator will try to match you with an existing van based on your needs

Metro Mobility



Telephone 719-392-2396; Option 2 for Taxi Choice Option

Website coloradosprings.gov/mountain-metro/page/mountain-metro-mobility?mlid=8501

Service For	Individuals who, because of their disability, are unable to use Mountain Metro fixed-bus service	Wheelchair Accessible, Airport Service
--------------------	--	--

Service Area

Colorado Springs;
Manitou Springs

Level of Service

Door to door

Hours of Service

5:30 a.m. – 9:45 p.m.
7 days a week; weekend and evening services are limited

Cost

\$3.50 one-way

Advance Time to Schedule Rides

3 days advance for Taxi Choice Option

Additional Information

Must fill out an application, within 21 days of receiving completed application applicants will conduct an in-person interview to determine eligibility; Service not provided on Thanksgiving Day, Christmas Day and New Year's Day; Mountain Metro Mobility offers a Taxi Choice Option for passengers who need a ride for 7 miles or less- companions are charged \$3.50 from the client account, same day rides or changes are not allowed

Envida



Telephone 719-633-4677

Website envidacares.org/transportation

Service For Eligibility Varies

Wheelchair Accessible, No Airport

Service Area

Colorado Springs; Calhan;
Hwy 94; Monument; Teller
and Park Counties

Level of Service

Services up to Door-thru-door

Hours of Service

Mon-Fri 5 a.m. to 6 p.m.
Sat 7 a.m. to 4 p.m.

Cost

Donations accepted

Advance Time to Schedule Rides

Minimum 3 days up to 2 weeks
in advance

Additional Information

Eligibility forms may be required

Fountain Valley Senior Center



Telephone 719-600-2643

Website humanservices.elpasoco.com/fountain-valley-senior-center

Service For 60+ or those who are non-elderly disabled who live in Southern and Eastern El Paso County may be eligible

Wheelchair Accessible, Airport Access

Service Area

Southern El Paso County:
Fountain, Security, Widefield, Stratmoor Valley, Stratmoor Hills, Ft. Carson and south of Drennan Rd

Eastern El Paso County:
Falcon, Ellicott, Rush, Yoder, Peyton and Calhan

Level of Service

Services up to Door-thru-door

Hours of Service

Mon–Fri 8 a.m. to 3:15 p.m.
No weekends or holidays

Cost

Suggested donation for services

Advance Time to Schedule Rides

48 to 72 hours

Additional Information

Other passengers younger than 60 are allowed to ride as caregivers or escorts of the eligible population served; Must register at Senior Center or can do intake form over the phone

GoodWheels



Telephone 719-442-2077

Website goodwillcolorado.org/services/community-transportation

Service For General Public

Wheelchair Accessible,
No Airport

Service Area

Colorado Springs

Level of Service

Door-thru-door

Hours of Service

Mon-Sat 7 a.m. to 7 p.m.

Cost

Medicaid covers doctor-ordered rides; non-medicaid \$30 one way, wheelchairs \$35 one-way

Advance Time to Schedule Rides

24 hours

Additional Information

Does accept Medicaid and private pay on sliding scale

Rocky Mountain PACE



Telephone 719-623-1170

Website rmhcare.org/programs/rocky-mountain-pace/pace-services

Service For 55+ and enrolled in PACE

Wheelchair Accessible,
No Airport

Service Area

Colorado Springs, Fountain,
Manitou Springs

Level of Service

Door-thru-door

Hours of Service

Mon–Sat 6:30 a.m. to 5 p.m.
Can service outside of those
hours if necessary

Cost

No cost if eligible for Medicaid

Advance Time to Schedule Rides

PACE coordinates

Additional Information

Eligibility: must be enrolled in PACE, 55+, eligible for nursing home services by State of Colorado; If eligible for Medicaid — no cost for PACE services, if eligible for Medicare and Medicaid — no cost for PACE Services, if eligible for Medicare only — PACE will arrange a private pay rate to cover the Medicaid costs

Silver Key Senior Services



Telephone 719-884-2300

Website silverkey.org/services/reserve-ride

Service For 60+ residing in Colorado Springs, Manitou Springs and some surrounding communities

Wheelchair Accessible, No Airport

Service Area

Colorado Springs; Manitou Springs and some surrounding communities

Level of Service

Door-thru-door

Hours of Service

Reservation hours:

Mon-Fri 7:30 a.m. to 4:30 p.m.

Transportation service hours:

Mon-Fri 8:30 a.m. - 4:00 p.m.

Cost

Suggested donation of \$3.50 per ride

Advance Time to Schedule Rides

Up to 2 weeks in advance; recommended at least 1 week in advance

Additional Information

Eligibility: 60 years or older residing in Colorado Springs, Manitou Springs and some surrounding communities; must register; trips are scheduled on a first-come, first-served basis

Envida



Telephone 719-633-4677

Website envidacares.org/transportation

Service For General Public

Wheelchair Accessible, No Airport

Service Area

Colorado Springs; Calhan;
Hwy 94; Monument;
Teller and Park Counties

Level of Service

Services up to Door-thru-door

Hours of Service

Mon–Sat 7:30 a.m. to 5 p.m.

Cost

Ride donation of \$5

Advance Time to Schedule Rides

Minimum 3 days up to 2 weeks
in advance
Deviated pickups require
advanced notice

Additional Information

Check website to see if route is affected by weather

Beo Mobility



Telephone 719-387-5773

Website beopersonalcare.com/mobility

Service For General Public

Wheelchair Accessible, Airport Access

Service Area

Colorado Springs, but occasionally out of state to a new facility

Level of Service

Door-thru-door

Hours of Service

Mon-Sun 6 a.m. to 8 p.m.

Cost

Within 15 miles is \$50 one way; 15+ miles is based on a mileage rate

Advance Time to Schedule Rides

24 hours

Additional Information

Only bills through Optum insurance, everything else is private pay

Asteri EMS / The Way



Telephone 719-675-0058

Website asteriems.com

Service For Qualified Colorado
Medicaid Recipients

Wheelchair Accessible,
No Airport

Service Area

Colorado Springs and
Manitou Springs

Level of Service

Door to door

Hours of Service

Mon–Sat 7 a.m. to 6 p.m.

Cost

Covered under Medicaid; Private
pay \$50 each way up to 10 mi,
then \$4.50 each mile after

Advance Time to Schedule Rides

48 to 72 hours

Additional Information

Veterans get a 10% discount for private pay rides

Axel Medical Transportation



Telephone 719-401-7870

Website axtransit.com

Service For Qualified Medicaid Recipients

Wheelchair Accessible,
No Airport

Service Area

Colorado Springs, Manitou Springs, Security-Widefield, Fountain, Monument

Level of Service

Door to door

Hours of Service

Mon–Sat 6 a.m. to 5 p.m.

Cost

Covered under Medicaid for Medicaid-approved medical appointments

Advance Time to Schedule Rides

48 hours; 1 week for appointments in Pueblo

Additional Information

New customers need to call to verify eligibility

Medicaid NEMT Rides

Blue Skies Transportation



Telephone 719-357-9070

Website blueskiestransportation.com

Service For Medicaid Eligible Clients

Not Wheelchair Accessible,
No Airport

Service Area

Must start in El Paso county;
will go to Denver, Castle Rock,
Pueblo, Canon City

Level of Service

Door to door

Hours of Service

Mon–Fri 7 a.m. to 5 p.m.
Sat 9 a.m. to 4 p.m.

Cost

Covered under Medicaid

Advance Time to Schedule Rides

48 hours in advance if in El Paso
county; 5 days in advance if
outside Colorado Springs

Additional Information

Can only take small walkers, no wheelchairs

Medicaid NEMT Rides

Envida



Telephone 719-633-4677

Website envidacares.org/transportation

Service For Eligibility Varies

Wheelchair Accessible,
No Airport

Service Area

El Paso and Teller County

Level of Service

Services up to Door-thru-door

Hours of Service

Service designed to accommodate eligible appointments

Cost

No charge for Medicaid eligible members

Advance Time to Schedule Rides

Minimum 3 days up to 2 weeks in advance

Additional Information

Must be 60 + and fill out eligibility form; Handles Medicaid's NEMT mileage reimbursement for family and friends who have volunteered to provide a medical or behavioral health ride

Friends Transportation



Telephone 719-725-9999

Service For Medicaid Recipients Only

Wheelchair Accessible,
No Airport

Service Area

Colorado Springs

Level of Service

Door to door

Hours of Service

Mon–Fri 4:30 a.m. to 5:30 p.m.

Cost

No charge for Medicaid
eligible members

Advance Time to Schedule Rides

Minimum 48 hours in advance

Medicaid NEMT Rides

GoodWheels



Telephone 719-442-2077

Website goodwillcolorado.org/services/community-transportation

Service For General Public

Wheelchair Accessible,
No Airport

Service Area

Colorado Springs

Hours of Service

Mon–Sat 7 a.m. to 7 p.m.

Level of Service

Door-thru-door

Cost

Medicaid covers doctor-ordered rides; non-medicare \$30 one way, wheelchairs \$35 one-way

Advance Time to Schedule Rides

24 hours

Medicaid NEMT Rides

Medride



Telephone 719-545-3333

Website medridecolorado.com

Service For Colorado Medicaid
Recipients Only

Wheelchair Accessible,
No Airport

Service Area

El Paso County

Level of Service

Door to door

Hours of Service

Mon–Fri 6 a.m. to 7 p.m.
Will work outside of those
hours if requested

Cost

No charge for Medicaid
eligible members

Advance Time to Schedule Rides

24 to 48 hours in advance

Additional Information

Must be a current Colorado Medicaid client and be determined to not have access to other means of transportation, including free transportation

Second Home Care



Telephone 719-375-8121; 719-388-3827

Website secondhomeadc.com/transportation

Service For Medicaid Recipients Only

Wheelchair Accessible,
No Airport

Service Area

El Paso County, Teller and
Park County

Level of Service

Door to door

Hours of Service

Mon–Sat 8 a.m. to 4 p.m.

Cost

No charge for Medicaid eligible
members; accepts private pay

Advance Time to Schedule Rides

48 hours

Transit to Care



Telephone 719-644-6005

Website transit2care.com

Service For Medicaid Recipients Only

Wheelchair Accessible,
No Airport

Service Area

El Paso County, Calhan,
Pueblo, Teller County

Level of Service

Door to door

Hours of Service

Mon–Sun 3 a.m. to 6 p.m.

Cost

No charge for Medicaid eligible
members; private pay

Advance Time to Schedule Rides

24 hours

Taxi

Z-Trip — Colorado Springs



Telephone 719-766-4567

Website ztrip.com/colorado-springs

Service For General Public Wheelchair Accessible*, Airport Access

Service Area

Statewide

Level of Service

Door to door

Hours of Service

24 hours a day / 7 days a week

Cost

\$2.50 flat fee + \$2.25/mile

Advance Time to Schedule Rides

On-call

Additional Information

* Wheelchair accessible vehicles available upon request;
Download the Z-Trip app through Google Play or the Apple App Store

Airport Service

Groome Transportation



Telephone 719-687-3456

Website groometransportation.com/colorado-springs

Service For General Public Wheelchair Accessible*, Airport Access

Service Area

Colorado Springs to DIA

Level of Service

Bus Stop Location

Hours of Service

Mon–Fri 6 a.m. to 10 p.m.
Sat–Sun 8 a.m. to 6 p.m.

Cost

Prices vary depending on bus stop location; up to \$50 for adults, \$45 for 65+, \$25 children 13 and under

Advance Time to Schedule Rides

Can get same day transportation, but not guaranteed; it is best to schedule a reservation

Additional Information

Stops at COS airport, Hotel Elegante, The Antlers, The Academy Hotel, Monument Park-n-Ride, Castle Rock Days Inn, DIA;

* Indicate when making reservation that accessibility is needed

Ride Share Apps

Lyft



Telephone Download the Lyft App

Website lyft.com/rider/cities/colorado-springs-co

Service For General Public

Not Wheelchair Accessible,
Airport Access

Service Area

Statewide

Hours of Service

24 hours a day / 7 days a week

Level of Service

Door to door

Cost

Varies based on mileage, location,
time of day, and traffic

Advance Time to Schedule Rides

10 minutes to 7 days

Additional Information

Download the Lyft app through Google Play or the Apple App Store

Ride Share Apps

Uber



Telephone Download the Uber App

Website uber.com/global/en/cities/colorado-springs

Service For General Public

Not Wheelchair Accessible,
Airport Access

Service Area

Statewide

Hours of Service

24 hours a day / 7 days a week

Level of Service

Door to door

Cost

Varies based on mileage, location,
time of day, and traffic

Advance Time to Schedule Rides

15 minutes to 30 days

Additional Information

Download the Uber app through Google Play or the Apple App Store; when you schedule at least 60 minutes in advance, your price for the trip will be locked in

Area Bike Lanes, Routes and Trails



Website coloradosprings.gov/bikes/page/city-bike-maps

Description

To find the safest way to ride a bike or scooter in Colorado Springs, please visit <https://coloradosprings.gov/bikemap> to access an area map

Bike-to-Transit



Website coloradosprings.gov/mountain-metro/page/bike-n-bus-program

Colorado Springs Pedestrian Trails



Website <https://coloradosprings.gov/trails>

Service For General Public

Trails may be Wheelchair Accessible, No Airport

Description

Colorado Springs park trails are shared-use trails, meaning you may encounter bicyclists, hikers and runners, equestrians, and trail users with dogs as you venture along our great trail system

Please visit <https://coloradosprings.gov/trails> to access information on Park and Open Space Trails, Urban Trails, Manitou Incline and Electric Bikes: Trails and Policies

Pike-Ride



Telephone Download the Pike-Ride App

Website pikeride.org

Service For General Public

Not Wheelchair Accessible,
No Airport

Description

Pike-Ride is a publicly accessible electric bike-share program located primarily in downtown Colorado Springs and Manitou Springs. Bikes can be found at local kiosks and rented by the minute, day, or yearly subscription.

Cost

Pay As You Go- \$1 to unlock the bike and \$0.15 per minute
24 Hour Pass- \$20
Monthly Membership- \$35
Annual Membership- \$150
WERIDE Annual Membership- \$20
(Based on financial hardship. Proof of financial Assistance is required to apply. Examples include: TANF, SNAP, Medicaid, Unemployment Verification, SSI, etc.)

Additional Information

People can access and rent a bike by downloading the Pike-Ride App through Google Play or the Apple App Store. The app will show the location of the closes bike to you and the amount of charge on the battery. Once you have chosen a bike on the app, you will be given an access code to unlock the bike from the kiosk

Scooters



Telephone Download the LIME or VEO app

Website downtowncs.com/scooters/

Service For General Public

Not Wheelchair Accessible,
No Airport

Service Area

Downtown Colorado Springs

Hours of Service

5 a.m. to 11 p.m. / 7 days a week

How to Access

Download the LIME or VEO app through Google Play or the Apple App Store to rent and find a scooter downtown.

Cost

Cost: \$1 to start and \$0.29/min + tax

Additional Information

The City of Colorado Springs has contracted with two electric scooter companies, LIME and VEO, to offer another option for getting around downtown. Scooters are located in designated areas or “dismount zones” and can be found using the LIME or VEO app

Scooters can only be used in designated areas of downtown Colorado Springs. See the Downtown Partnership’s website for more details. <https://downtowncs.com/scooters/>

Veteran Transportation

Veterans Transportation Service (VTS)

Telephone Primary 719-227-4755 / Alternate 720-857-5419

Website www.vetride.va.gov

Service For Veteran VA medical appointments Wheelchair Accessible, No Airport

Service Area

Shuttle from PFC Floyd K. Lindstrom VA Clinic in Colorado Springs (COS) to Rocky Mountain Regional (RMR) VA Medical Center in Aurora

Level of Service

Shuttle

Hours of Service

Reservation Scheduling hours:
Mon-Fri 7 a.m. to 3 p.m.

Shuttle operation hours:
COS to RMR
Mon-Fri 6:45 a.m. and 9:45 a.m.

RMR to COS
Mon-Fri Noon and 2:30 p.m.

Cost

No cost

Advance Time to Schedule Rides

Up to one month in advance; recommend at least two weeks in advance

Additional Information

Must schedule in advance for shuttle seating availability; Must provide your Veteran health identification card or Veteran identification number to driver. A transportation coordinator will call to confirm appointments made online.

Veteran Transportation

Beneficiary Travel – Special Mode Transportation



Telephone 720-857- 5420 or 720-857-5421

Website www.vetride.va.gov

Service For Veteran VA medical
Appointments

Wheelchair Accessible,
No Airport

Service Area

Colorado Springs and
surrounding areas

Hours of Service

Scheduling office hours
8 a.m. to 4:30 p.m. / 7 days a week

Level of Service

Door to Door

Cost

No cost

Advance Time to Schedule Rides

Recommend two weeks in advance

Additional Information

Special mode transportation is provided to Veterans who meet beneficiary travel eligibility and cannot transfer into a privately owned vehicle without assistance or require medical care during transport that could not otherwise be provided by an attendant.

Teller County

Public Bus Service

City of Cripple Creek/Victor Transit



Telephone 719-689-7711; 719-689-3753

Website cityofcripplecreek.com/departments/transportation-department

Service For General Public

Wheelchair Accessible, No Airport

Service Area

Victor, Cripple Creek, Divide,
Woodland Park

Level of Service

Bus Stop Location

Hours of Service

Cripple Creek Route

Mon–Fri 7 a.m. – 7 p.m.

Sat–Sun 9:45 a.m. – 4:45 p.m.

Victor Route

Mon–Fri 7 a.m. – 7 p.m.

Sat–Sun 9:45 a.m. – 5:15 p.m.

Cost

Free for 60+, individuals
with disabilities and children
12 and under

Additional Information

Discount fares available for Medicare/Disabled, senior 60+ and youth ages 12 – high school at \$0.85;

Holidays: service not provided on New Year’s Day, MLK Day, President’s Day, Memorial Day, Independence Day, Labor Day, Veteran’s Day, Thanksgiving Day, Day after Thanksgiving, Christmas Eve 1/2 day, Christmas Day, New Year’s Eve 1/2 day

TSC Transit - Wednesday Free Shuttle



Website tellerseniorcoalition.org/transportation

Service For General Public Wheelchair Accessible, No Airport

Service Area

Woodland Park to Green Mountain Falls
Woodland Park transfer to Cripple Creek via Cripple Creek Transit.

Level of Service

Bus Stop Location

Hours of Service

Wed 9 a.m. – 1 p.m.

Cost

Free

Teller County

Senior / NEMT Transportation

Envida



Telephone 719-633-4677

Website envidacares.org/transportation

Service For Eligibility Varies

Wheelchair Accessible, No Airport

Service Area

El Paso and Teller Counties

Level of Service

Services up to Door-thru-door

Hours of Service

Mon–Fri 6 a.m. – 6 p.m.

Sat 6 a.m. – 4 p.m.

Cost

Eligibility Varies

Advance Time to Schedule Rides

Minimum 3 days up to 2 weeks
in advance

Additional Information

Must be 60+ and fill out eligibility form; Handles Medicaid’s NEMT mileage reimbursement for family and friends who have volunteered to provide a medical or behavioral health ride

Teller County

Senior / NEMT Transportation

Second Home Care



Telephone 719-375-8121; 719-388-3827

Website secondhomeadc.com/transportation

Service For Medicaid Recipients Only

Wheelchair Accessible,
No Airport

Service Area

El Paso County, Teller
and Park County

Level of Service

Door to door

Hours of Service

Mon-Fri 8 a.m. – 4 p.m.

Cost

No charge for Medicaid eligible
members; accepts private pay

Advance Time to Schedule Rides

48 hours

Teller County

Senior / NEMT Transportation

Teller Cab



Telephone 719-687-8222

Website [facebook.com/TellerCab](https://www.facebook.com/TellerCab)

Service For General Public,
Medicaid Recipients

Wheelchair Accessible,
Airport Access

Service Area

Teller County and nearby areas

Hours of Service

24 hours a day / 7 days a week

Level of Service

Door to door

Cost

Varies by mileage; free for
individuals on Medicaid

Additional Information

Teller Cab works with Medicaid to give qualified individuals rides to appointments

Teller Senior Coalition



Telephone 719-687-0256

Website tellerseniorcoalition.org

Service For Medicaid recipients who are 18+;
Seniors

Wheelchair
Accessible,
No Airport

Service Area

Teller County

Level of Service

Door thru door

Hours of Service

Mon–Fri 7:30 a.m. – 5:30 p.m.

Cost

Free for 60+*, low income and individuals with disabilities, and Medicaid Eligible

Advance Time to Schedule Rides

48 hours

Additional Information

*If 60+, on Medicaid or low income, call to see if you qualify for a free ride. Please try to book ride at least 1 week in advance to ensure your ride can be accommodated

Teller County

Senior / NEMT Transportation

Transit to Care



Telephone 719-644-6005

Website transit2care.com

Service For Medicaid Recipients Only

Wheelchair Accessible,
No Airport

Service Area

El Paso County, Calhan,
Pueblo, Teller County

Level of Service

Door to door

Hours of Service

Mon–Sun 3 a.m. – 6 p.m.

Cost

No charge for Medicaid eligible
members; private pay

Advance Time to Schedule Rides

24 hours

Envida Medicaid Ride Reimbursement



Telephone 719-633-4677

Website envidacares.org/transportation

Service For Medicaid Eligible

Not Wheelchair Accessible,
No Airport

Service Area

Park County

Level of Service

Services provided by friend or family member

Hours of Service

Arranged by Medicaid recipient and personal driver

Cost

No cost to Medicaid eligible. This is a rider reimbursement program

Additional Information

Envida handles Medicaid's NEMT mileage reimbursement for family and friends who have volunteered to provide a medical or behavioral health ride. Please call for details

Second Home Care



Telephone 719-375-8121; 719-388-3827

Website secondhomeadc.com/transportation

Service For Medicaid Recipients Only

Wheelchair Accessible,
No Airport

Service Area

El Paso County, Teller
County and Park County

Level of Service

Door to door

Hours of Service

Mon-Fri 8 a.m. – 4 p.m.

Cost

No charge for Medicaid eligible
members; accepts private pay

Advance Time to Schedule Rides

48 hours

Teller Senior Coalition



Telephone 719-687-0256

Website tellerseniorcoalition.org

Service For Medicaid recipients who are 18+; Free shuttle service on Wednesdays for the general public	Wheelchair Accessible, No Airport
---	---

Service Area

Eastern Park County

Level of Service

Door thru door

Hours of Service

Mon-Fri 7:30 a.m. – 5:30 p.m.

Cost

*Free for 60+, low income and individuals with disabilities

Advance Time to Schedule Rides

48 hours (see additional information)

Additional Information

* If 60+, on Medicaid or low income, call to see if you qualify for a free ride. Please try to schedule a ride by calling at least 1 week in advance to ensure your ride can be accommodated



2022 BOARD OF DIRECTORS

Chair: Commissioner Stan VanderWerf
First Vice Chair: Mayor Sharon Thompson
Second Vice Chair: Councilmember Nancy Henjum

Secretary: Commissioner Dick Elsner
Treasurer: Mayor Don Wilson

CITY OF COLORADO SPRINGS

Nancy Henjum, Councilmember
Dave Donelson, Councilmember
Yolanda Avila, Councilmember
Bill Murray, Councilmember (Alternate)

CITY OF CRIPPLE CREEK

Vacant

CITY OF FOUNTAIN

Sharon Thompson, Mayor
Gordon Rick, Councilmember (Alternate)

CITY OF MANITOU SPRINGS

John Graham, Mayor
Nancy Fortuin, Mayor Pro Tem (Alternate)

CITY OF VICTOR

Brandon Gray, Mayor
Vacant (Alternate)

CITY OF WOODLAND PARK

Hilary Labarre, Mayor
Kellie Case, Mayor Pro tem (Alternate)

EL PASO COUNTY

Stan VanderWerf, Commissioner
Holly Williams, Commissioner
Cami Bremer, Commissioner

PARK COUNTY

Dick Elsner, Commissioner
Ray Douglas, Commissioner (Alternate)

TELLER COUNTY

Erik Stone, Commissioner
Dan Williams (Alternate)

TOWN OF GREEN MOUNTAIN FALLS

Vacant

TOWN OF RAMAH

Shannon Walker, Trustee

TOWN OF ALMA

Saam Golgoon, Mayor
Andrew Zimmerman, Trustee

TOWN OF CALHAN

Roland Gardine, Mayor Pro-Tem

TOWN OF FAIRPLAY

Frank Just, Mayor

TOWN OF MONUMENT

Don Wilson, Mayor
Darcy Schoening, Trustee (Alternate)

TOWN OF PALMER LAKE

Glant Havenar, Trustee
Bill Bass, Mayor (Alternate)

COLORADO TRANSPORTATION COMMISSION

Lisa Hickey (Non-Voting)

COLORADO DEPARTMENT OF TRANSPORTATION

Richard Zamora (Non-Voting)

REPRESENTATIVE, MILITARY COMMUNITY

Keith Klaehn (Non-Voting)

FORT CARSON

PETERSON AIR FORCE BASE

SCHRIEVER AIR FORCE BASE

UNITED STATES AIR FORCE ACADEMY

AIR QUALITY CONTROL COMMISSION

WATER QUALITY CONTROL COMMISSION

REGIONAL TRANSIT REPRESENTATIVE

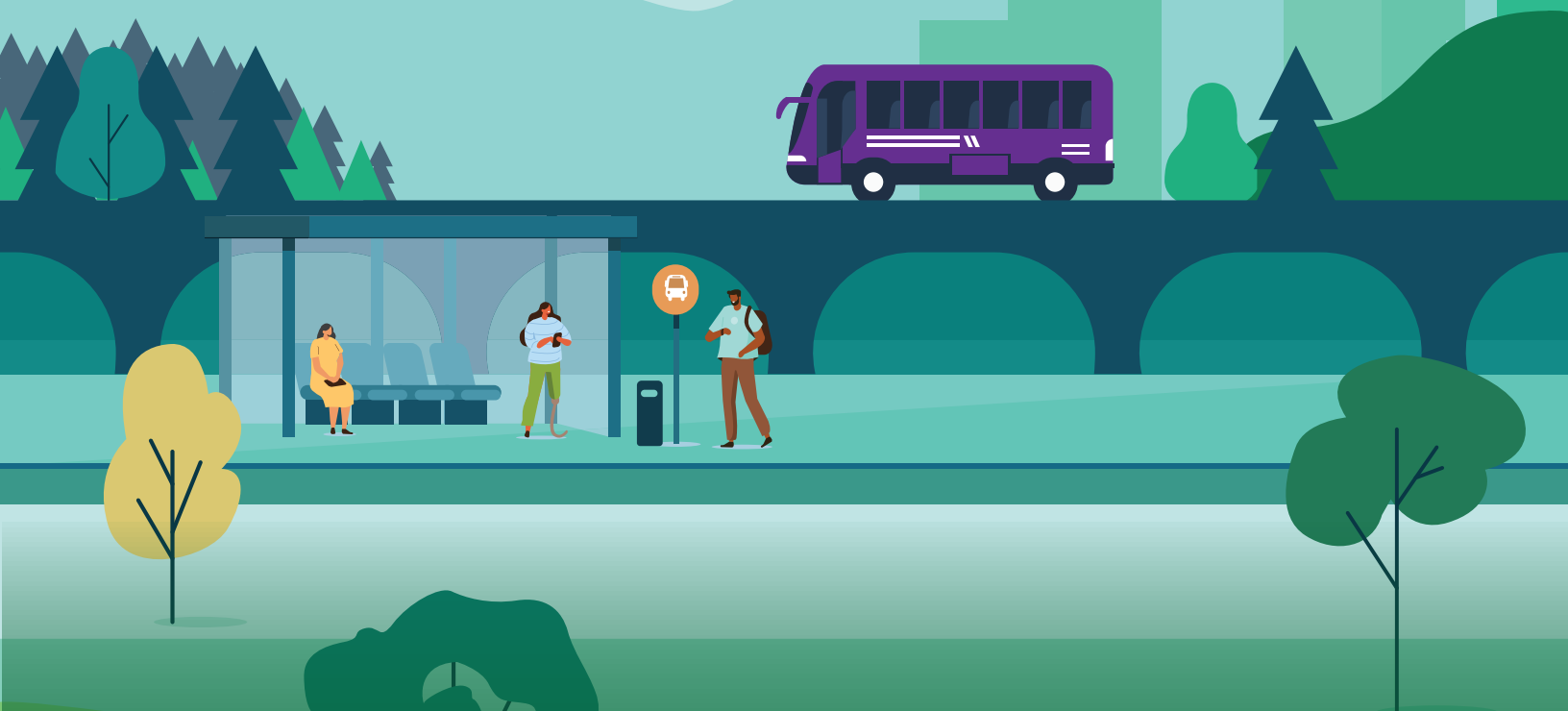
Sharon Thompson, Mayor
Yolanda Avila, Councilmember (Alternate)



Pikes Peak Area
Council of Governments
Communities Working Together



PIKES PEAK
AREA AGENCY ON AGING
Answers • Assistance • Advocacy



PIKES PEAK AREA COUNCIL OF GOVERNMENTS

14 S. Chestnut Street
Colorado Springs, CO 80905
(719) 471-7080 | www.ppacg.org

CONNECT WITH US



www.facebook.com/ppacg



www.twitter.com/ppacg



www.youtube.com/user/PPACG1



www.linkedin.com/company/pikes-peak-area-council-of-governments

MAY 2022